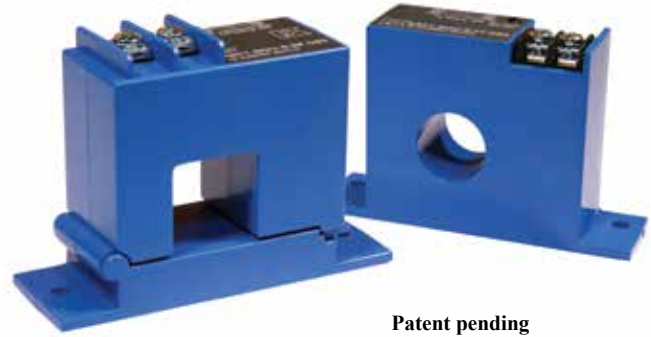


# ASC SERIES

## Factory-calibrated Current Operated Switches

ASC Series Current Operated Switches are precision calibrated at the factory per customers' specifications and guaranteed within 1% accuracy. Because the switch is factory calibrated eliminating the need to turn the potentiometer to the correct position in the field, installation time is substantially reduced resulting in a significant cost savings. The ASC combines a current transformer, signal conditioner and limit alarm into a single package for use in status monitoring or proof of operation applications and is perfect for OEM applications where the need for a limit alarm is required. Available in a solid-core enclosure or in a split-core enclosure to maximize ease of installation.



Patent pending

### Current Sensing Switch Applications

#### Electronic Proof of Flow

- Current operated switches eliminate the need for multiple pipe or duct penetrations and are more reliable than electromechanical pressure or flow switches.

#### Conveyors

- Detects jams and overloads.
- Interlocks multiple conveyor sections.

#### Lighting Circuits

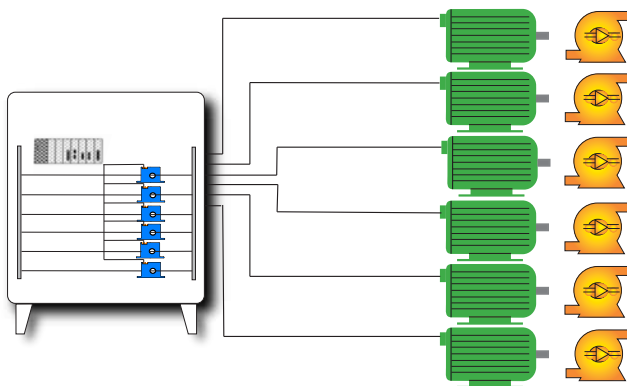
- Easier to install and more accurate than photocells.

#### Electrical Heaters

- Faster response than temperature sensors.

#### Air Handling Fan Protection

Factory-set trip points are ideal when there are several loads, all using the same motor to drive the fan blades.



### Current Sensing Switch Features

#### Universal Output

- N.O. or N.C. solid-state switch for control circuits up to 135 VAC/DC.
- Compatible with most automation systems.

#### Self-powered

- Cuts installation and operating costs.

#### Precision-Calibrated Factory Set Trip Point

- Speeds startup.
- Improves safety.

#### Solid- or Split-core Case

- Versions tailored for each installation.

#### LED Indication

- Provides quick visual indication of contact status.

#### Built-in Mounting Feet

- Simple, two-screw panel mount or attach with optional DIN rail brackets.

#### Designed to Meet UL, CUL and CE Approval

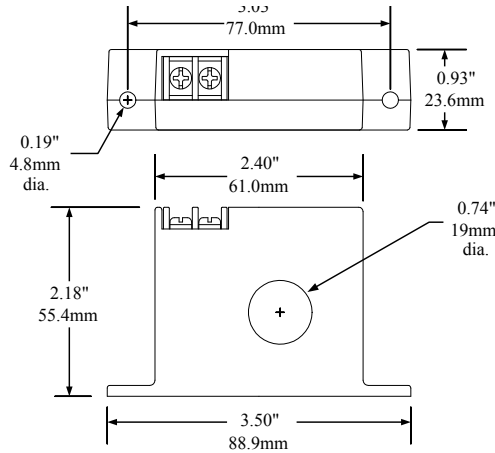
- Accepted worldwide.



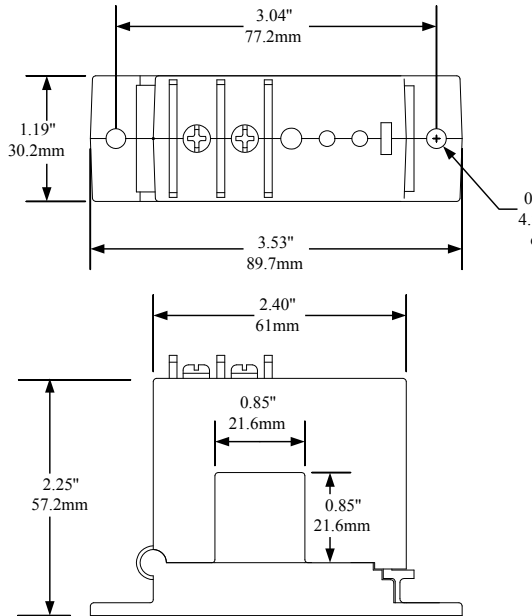
Free program expedites evaluation process.  
See page 1 for details.

Current Sensing Switch Dimensions

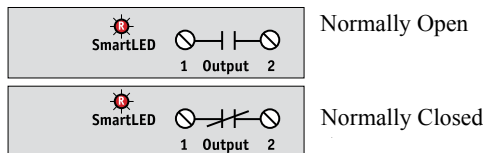
FT Case



SP Case



Current Sensing Switch Connections



Current Sensing Switch Specifications

|                          |  |         |          |
|--------------------------|--|---------|----------|
| <b>Power Supply</b>      | None — Self-powered  |         |          |
| <b>Output</b>            | Magnetically Isolated Solid-State Switch   |         |          |
| <b>Output Rating</b>     | <ul style="list-style-type: none"> <li>• N.O. Version: 0.3 A @ 135 VAC or VDC</li> <li>• N.C. Version: 0.3 A @ 135 VAC or VDC</li> <li>• Not polarity sensitive</li> </ul> |         |          |
| <b>Off-State Leakage</b> | <10 $\mu$ A  |         |          |
| <b>Accuracy</b>          | 1%   |         |          |
| <b>Response Time</b>     | 120 ms   |         |          |
| <b>Setpoint Range</b>    | <ul style="list-style-type: none"> <li>• Solid-core: 2–150 A (factory set)</li> <li>• Split-core: 3–150 A (factory set)</li> </ul>   |         |          |
| <b>Hysteresis</b>        | 5% of Setpoint   |         |          |
| <b>Overload</b>          | MODEL  | 6 SEC   | 1 SEC    |
|                          | • All  | • 400 A | • 1000 A |
| <b>Isolation Voltage</b> | Tested to 5000 VAC   |         |          |
| <b>Sensing Aperture</b>  | <ul style="list-style-type: none"> <li>• -FT Case: 0.74" (19 mm) dia.</li> <li>• -SP Case: 0.85" (21.6 mm) sq.</li> </ul>  |         |          |
| <b>Case</b>              | UL94 V0 Flammability Rated   |         |          |
| <b>Environmental</b>     | -4 to 122°F (-20 to 50°C)<br>0–95% RH, non-condensing  |         |          |
| <b>Listings</b>          | Designed to meet UL 508 Industrial Control Equipment (USA & Canada)  |         |          |

Ordering Information

Sample Model Number: ASC-NOU-6-SP-090  
 Factory set AC current operated switch, normally open, 60 Hz frequency, split-core, 90 A trip point.



(1) Output Rating

|     |                 |
|-----|-----------------|
| NOU | Normally Open   |
| NCU | Normally Closed |

(2) Primary Circuit Frequency

|   |       |
|---|-------|
| 6 | 60 Hz |
| 5 | 50 Hz |

(3) Case Style

|    |                       |
|----|-----------------------|
| FT | Solid-core, Top Term. |
| SP | Split-core            |

(3) Factory Set Trip Point

|            |  |
|------------|--|
| 002 to 150 | Solid-core Model Factory Set Trip Point in Amps. |
| 003 to 150 | Split-core Model Factory Set Trip Point in Amps. |

Contact:  
 Industrial Process Measurement, Inc.  
 3910 Park Avenue, Unit 7  
 Edison, NJ 08820  
 732-632-6400  
 support@instrumentation2000.com  
<http://www.instrumentation2000.com>

